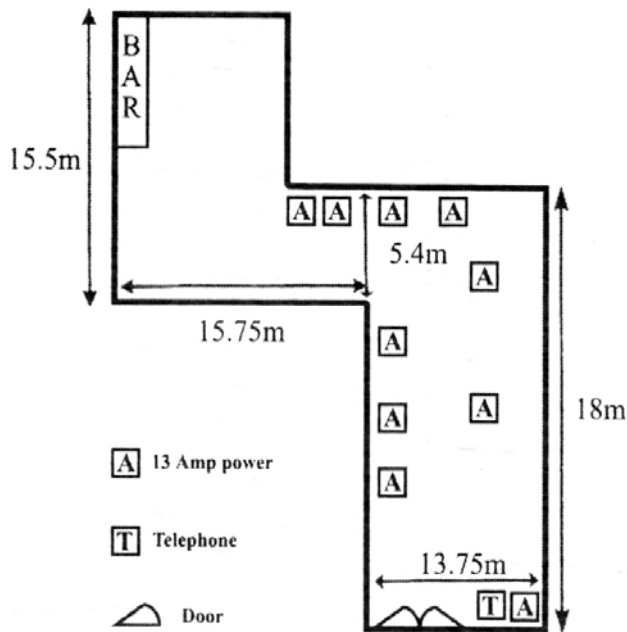


Rooms & Capacities

Located at the rear of the Hotel,
on the first floor



The Princess Ballroom

Capacities

Theatre	250
Classroom	70
Boardroom	60
U-Shape	50
Buffet / Disco	450
Dinner Dance	220
Lunch / Dinner	220
Reception	400

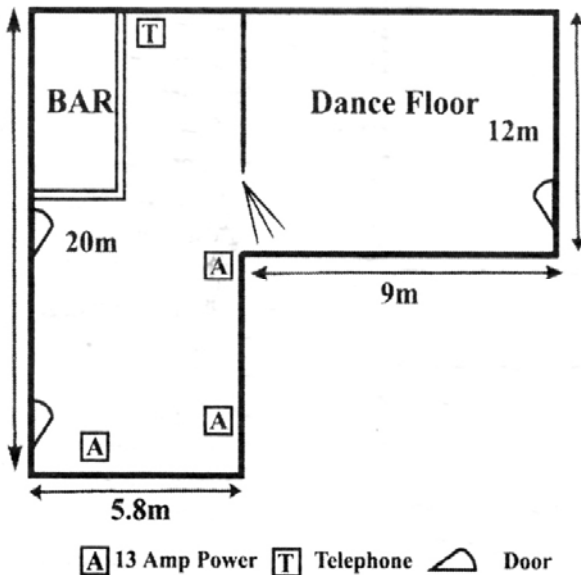
Technical

Tungsten / Fluorecent	✓
Dimmers	✓
Blackout	✓
Daylight	✓
Sound System	✓
13 Amp Power	20
Telephone	✓

Dimension

Length - 18m (57ft 10") Width - 13.75m (44ft 3")
 Ceiling Height - 3.56m (11ft 8") 2.7m (8ft 10")
 Door Height - 1.96m (6ft 6") Width - 1.09m (3ft 7")
 Total Area - 247 sq.m.

Located in the middle
of the first floor,



The Sandringham

Capacities

Theatre	30
Classroom	20
Boardroom	20
U-Shape	20
Buffet / Disco	170
Dinner Dance	50
Lunch / Dinner	50
Reception	45

Technical

Tungsten / Fluorecent	✗
Dimmers	✗
Blackout	✗
Daylight	✗
Sound System	✗
13 Amp Power	6
Telephone	✓

Dimension

Length - 20m (32ft 10") Width - 5.8m (19ft)
 Ceiling Height - 3.56m (11ft 8")
 Door Height - 1.96m (6ft 6") Width - 1.04m (3ft 5")
 Total Area - 116 sq.m.

Conferences & Meetings

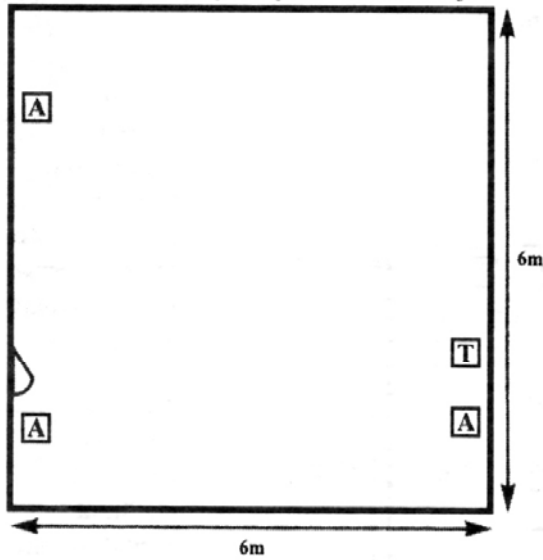
THE KINGS HOTEL


Proud to be Individual

Rooms & Capacities

Conferences & Meetings

Located on the first floor, to the left



A 13 Amp power **T** Telephone  Door

The Buckingham

Capacities

Theatre	20
Classroom	12
Boardroom	16
U-Shape	14
Buffet / Disco	N/A
Dinner Dance	N/A
Lunch / Dinner	N/A
Reception	N/A

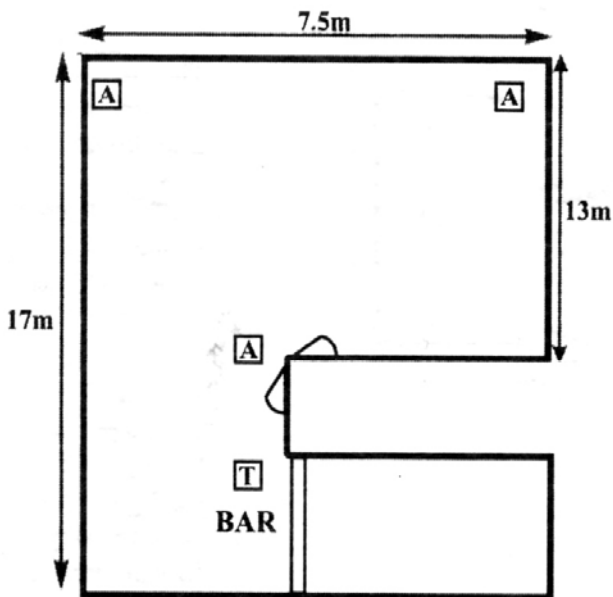
Technical


Tungsten / Fluorecent	✓
Dimmers	✗
Blackout	✓
Daylight	✓
Sound System	✗
13 Amp Power	6
Telephone	✓

Dimension

Length - 6m (19ft 3") Width - 6m (19ft 3")
 Ceiling Height - 3.66m (12ft)
 Door Height - 1.90m (6ft 3") Width - 1.5m (5ft)
 Total Area - 36 sq.m.

Located on the first floor,
at the front of the Hotel



A 13 Amp power **T** Telephone  Door

The Marlborough

Capacities

Theatre	90
Classroom	30
Boardroom	30
U-Shape	30
Dinner Dance	100
Lunch / Dinner	100
Reception	90

Technical

Tungsten / Fluorecent	✗
Dimmers	✓
Blackout	✗
Daylight	✓
Sound System	✗
13 Amp Power	3
Telephone	✓

Dimension

Length - 13m (41ft 10") Width - 7.5m (23ft 8")
 Ceiling Height - 3.56m (11ft 8")
 Door Height - 2.08m (6ft 10") Width - 0.84m (2ft9")
 Total Area - 129 sq.m.

THE KINGS HOTEL

Proud to be Individual

Rooms & Capacities

At A Glance

	Buckingham	Sandringham	Marlborough	Princess Ballroom	
Theatre	20	30	90	250	
Classroom	12	20	30	70	
Boardroom	16	20	30	60	
U-Shape	14	20	30	50	
Hollow Square	16	30	40	60	
Herringbone	12	36	60	60	
Banquet	N/A	N/A	80	200	
Rounds	N/A	50	70	160 large	180 small
Cabaret	N/A	N/A	80	140 rounds	160 square
Informal Cabaret (small rounds)	N/A	160	90	160	

Conferences & Meetings

THE KINGS HOTEL

Proud to be Individual